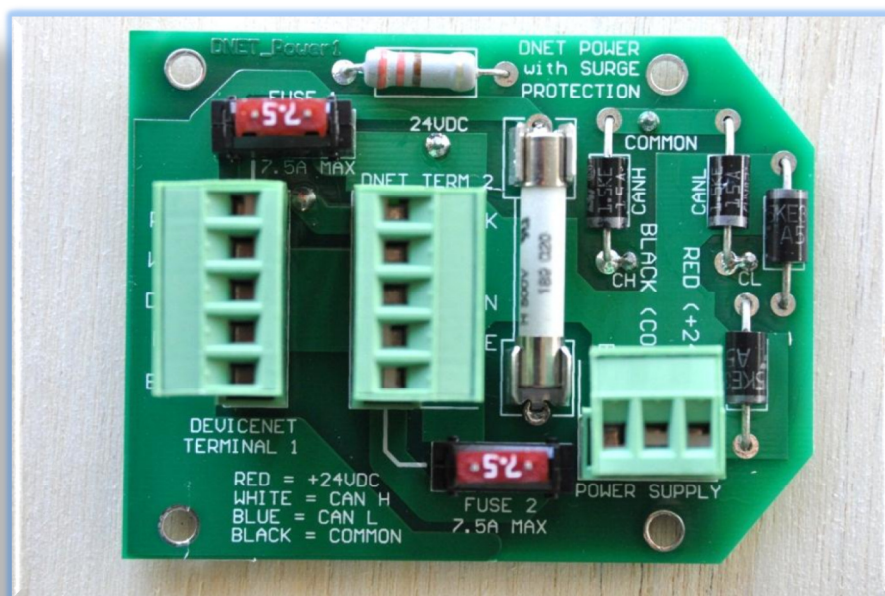


## Innovative Control Systems, Design and Solutions

### Smart Protection - Prevents Problems & Improves Reliability



#### Device Net Power Board with Surge Protection.

Help protect your system against problems caused by lightning strikes.

This PCB was developed to replace the standard power tap board after near by lightning strikes caused catastrophic failures of the electronic drive stages connected to several DeviceNet networks.

Our DNET power board with surge protection has been designed with added transorb protection, test points and plugin screw terminals in preference to the spring loaded style. A HRC fuse disconnects from earth should a large earth surge occur. It has been NATA tested to withstand a 2000V discharge.

To work correctly, this unit should be mounted in close proximity to the DeviceNet Power Supply and be the only earth on the circuit. After lightning surges have occurred, a quick check of the fuse with a multimeter is advised. A blown fuse will not prevent the DeviceNet from operating, but will decrease the noise immunity provided by the cable screen.